

Model: \_\_\_\_\_ Item #: \_\_\_\_\_ Date: \_\_\_\_\_

Project: \_\_\_\_\_ Qty: \_\_\_\_\_ Approved By: \_\_\_\_\_



**KR18-18BD Shown**  
Available in 1800 or 2100 Series



**KR18-18BF Shown**  
Available in 1800 or 2100 Series

## Standard Features

<b>Dump Sink</b>	20 gauge stainless steel w/ 1-1/2" drain in center. 7" deep bowl.
<b>Top (Flat Top)</b>	20 gauge stainless steel
<b>Front Apron</b>	20 gauge stainless steel
<b>Back Splash</b>	20 gauge stainless steel
<b>Sides</b>	20 gauge stainless steel
<b>Back &amp; Bottom</b>	20 gauge galvanized steel
<b>Legs</b>	1-5/8" tubular 16 gauge stainless steel with grey plastic bullet foot
<b>Electrical</b>	Duplex outlet located underneath
<b>Plumbing</b>	1/2" hot and cold water 1" IPS drain connection
<b>Outlet Hole</b>	One
<b>Low Lead Compliance</b>	Low lead compliant faucet meets California AB-1953 & Vermont S152 standards

## Optional Accessories

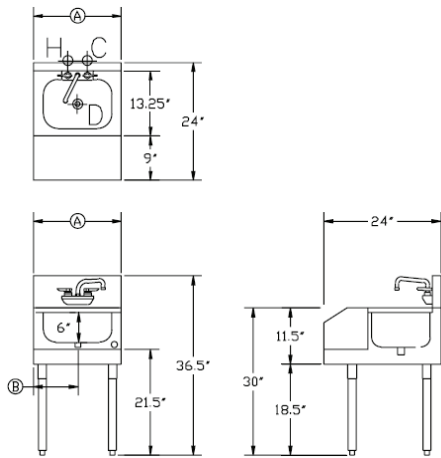
KR-310	Right End Side Splash
KR-311	Left End Side Splash
KR-501	Towel Ring
30-160	Perforated Dump Basket
KR-806	Upgrade: 6" Longer Stainless Steel Legs

Model: \_\_\_\_\_ Item #: \_\_\_\_\_ Date: \_\_\_\_\_

Project: \_\_\_\_\_ Qty: \_\_\_\_\_ Approved By: \_\_\_\_\_

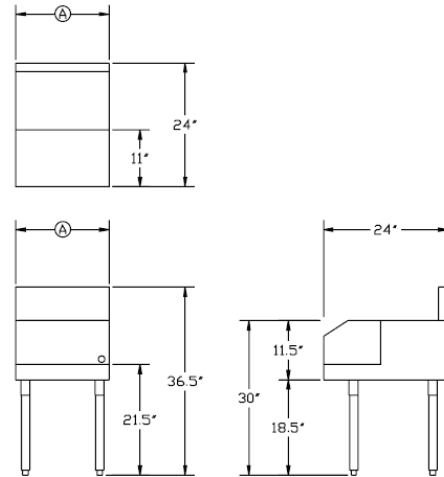
## 1800 Series: Blender/Dump Sink

Model Numbers	Length (A)	Left Side to Drain		Dump Sink Size	Weight (lbs.)
		(B)	Depth		
KR18-12BD	1'-0"	6"	24"	10" x 12" x 7"	43
KR18-14BD	1'-2"	7"	24"	10" x 12" x 7"	48
KR18-18BD	1'-6"	9"	24"	10" x 14" x 7"	53



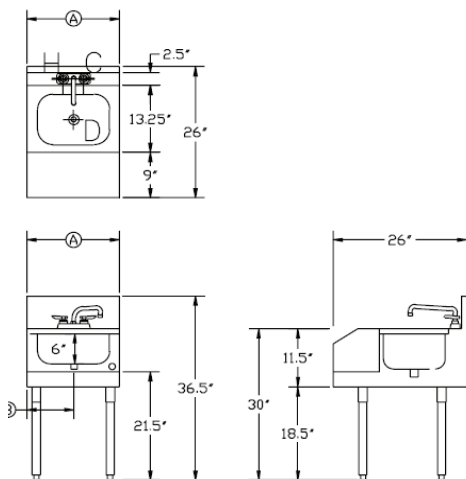
## 1800 Series: Flat Top

Model Numbers	Length	Depth	Weight (lbs.)
KR18-12BF	1'-0"	24"	39
KR18-14BF	1'-2"	24"	43
KR18-18BF	1'-6"	24"	48



## 2100 Series: Blender/Dump Sink

Model Numbers	Length (A)	Left Side to Drain		Dump Sink Size	Weight (lbs.)
		(B)	Depth		
KR21-12BD	1'-0"	6"	26"	10" x 12" x 7"	43
KR21-14BD	1'-2"	7"	26"	10" x 12" x 7"	48
KR21-18BD	1'-6"	9"	26"	10" x 14" x 7"	53



## 2100 Series: Flat Top

Model Numbers	Length	Depth	Weight (lbs.)
KR21-12BF	1'-0"	26"	39
KR21-14BF	1'-2"	26"	43
KR21-18BF	1'-6"	26"	48

