

F-Style Large Capacity Ice Storage Bins

F-Style Large Capacity Ice Storage Bins

Models

 F-700

 F-1300

 F-1325

 F-1650

 FC-1350


F-1300 Ice Storage Bin



FC-1350 Ice Storage Bin & Cart System

Standard Features

Manitowoc F-style large capacity ice storage bins are equipped with a sliding ice gate for increased employee safety, easier ice removal, and reduced spillage. Choose a bin width from 30", 48" or 60", with application ice storage capacities of 639, 1194, 1238, 1304 and 1494 lbs.

Sliding Ice Gate

- Controls ice flow into snout for easy removal with either scoop or shovel
- Returns easily to the full down position to stop ice filling.

Quality Construction:

- Stainless Steel Exterior
- Heavy-duty welded construction
- Non -CFS foamed-in-place insulation
- Impact -resistant sliding windows for easy bin inspection.

Durable Polyethylene Lift Door

- Ball catch hinge holds bin door open when scooping ice
- Eliminates sharp corners and gaskets
- Provides outstanding durability
- Offers maximum access for fast, easy ice removal
- Impact-resistant sliding windows for easy bin inspection

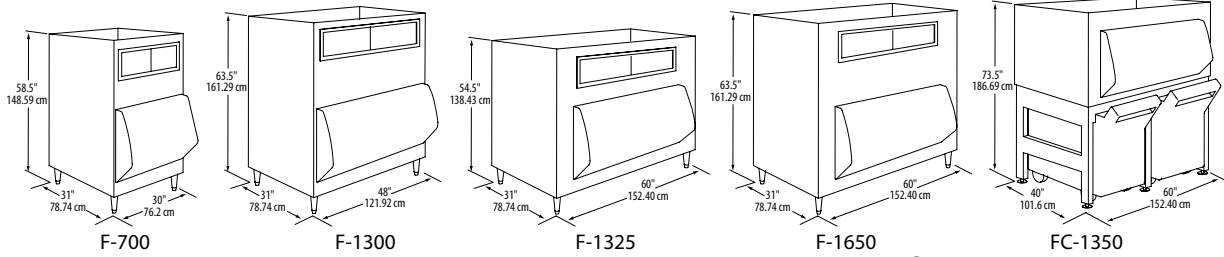
Warranty

Bin & Accessories: 3-Year Parts & Labor
Carts: 2-Year Parts & Labor





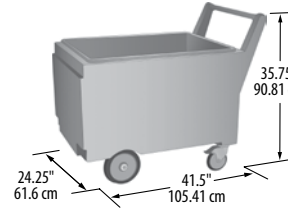
F-Style Large Capacity Ice Storage Bins



Standard Equipment

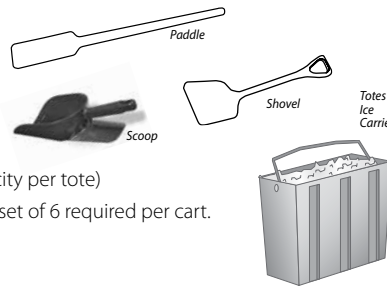
F-Series Bins Include: set of (4) 6" bin legs, ice scoop, stainless steel adapter for 30" or 48" Indigo Series Cubers (see chart)

FC-1350 Bin and Cart System Includes: bin, base, (2) 240 lb. capacity carts with lids, set of (6) flanged legs, Ice Paddle, stainless steel adapter for 30" or 48" Indigo Series Cubers (see chart)



Accessories

- Model # Description**
 - K-00412 Paddle 46.5" (118.11 cm) length
 - 00004199 85 oz. Scoop
 - K-00414 Shovel 36" (91.44 cm) Length
 - K-00416 Totes Ice Carrier, Set of 6 (25 lb. capacity per tote)
- Totes for use with FC-1350 cart. One set of 6 required per cart.



Storage Capacity

	Model	Application Storage lbs/kg	AHRI Theretical Storage lbs/kg	AHRI approved Cu. Ft
30"	F-700	639	520	21.5
		290	236	
45"	F-1300	1194	970	40.2
		542	440	
60"	F-1325	1238	1000	41.7
		562	454	
	F-1650	1494	1210	50.3
		678	549	
FC-1350	1304	1050	43.9	
	591	476		

Ice Deflectors — Required

Manitowoc Cuber Model	Ice Deflector Model Number
iT0450, iT0500, i0606, i0906, iT1200	K-00347
iT1500, iT1900	K-00349
i-1470C, i-1870C, i-2176C	K-00382 (for single ice machine) K-00383 (for side-by-side ice machines)
S-3070C, S-3300	K-00391

Bin Adapters

Model	Ice Makers on bin	Bin Width	iT0500	i0606	i0906 iT1200	i686C i976C iT1200C	i1470C i1870C i2176C	i1500 i1900	RNS0308, RNF0620, RNS1020C, RFS0300, RFF0620, RFF1220	RNF1100, RFF1300 RFF2200C	RFF2500	S3300 S3070C				
Model Width			30"	30"	30"	30"	30"	48"	22"	30"	36.7"	48"				
F-700	1	30"	K-303000 Single head Adapter (included with bin)					N/A	+K302200	K303000 included		N/A	N/A			
F-1300	1	48"	K-483048 Single head Adapter (included with Bin)					N/A						K483048 included with bin		
F-1325, F-1650	1	60"	K-603048 Single head Adapter (included with Bin)					N/A						K603048 included with bin		+K-604800
	2*	60"	K-603030 Side-by-Side 30" Head Adapter				N/A	+K-00421 & K-603030	+K603030	N/A	N/A	N/A				
FC-1350	1	60"	K-613048 Single head Adapter (included with Bin)					N/A						K613048 included with bin		+K-614800
	2*	60"	K-613030 Side-by-Side 30" Head Adapter				N/A	+K-00421 & K-613030	+K603030	N/A	N/A	N/A				

*For side by side application use with water-cooled, or ice machines with top air discharge option. Check machine clearance requirements. Shaded area indicates not a product application

Welbilt reserves the right to make changes to the design or specifications without prior notice.