



701 S Ridge Avenue, Troy, OH 45374
1-888-4HOBART • www.hobartcorp.com

LXeR advansys HOT



STANDARD FEATURES

- Racks per hour
LXeR Light Normal Heavy
 30 24 13
- .62 gallons of water per rack – LXeR
- Hot water sanitation
- Steam Elimination and Energy Recovery
- NSF Certified pot and pan cycle on heavy cycle
- Low chemical alert indicators
- Sense-A-Temp™ booster heater capable of 70°F rise
- Chemical pump “auto-prime”
- Advanced Service diagnostics
- Clogged wash arm sensing
- Custom cycle selection – light, normal, heavy
- Automated delime cycle – includes booster deliming
- Deep drawn stainless steel tank
- Microcomputer, top mounted controls with advanced digital cycle/temperature display
- Revolving upper and lower anti-clogging wash arms
- Snap in revolving upper and lower rinse arms
- Removable stainless steel scrap screen
- Corrosion resistant pump
- Energy Saver mode
- Automatic pumped drain
- 17" door opening
- Dirty water indicator
- Automatic fill
- Detergent, rinse aid and delime pumps standard
- Electric tank heat
- Two dishracks – one peg and one combination type
- Customizable “advansys” button to select favorites function
- Auto clean cycle washes down inside of machine at shutdown

MODEL

- ☐ LXeR – Energy Recovery

STANDARD VOLTAGE

- ☐ 120/208-240(3W)/60/1

OPTIONS AT EXTRA COST

- ☐ 208-240(2W)/60/1
- ☐ 208-240/60/3
- ☐ 220-240/50/1
- ☐ Door lock (prevents door from opening until completion of cycle)

ACCESSORIES

- ☐ Power cord kits
- ☐ Stainless steel base with 6" legs
- ☐ 17" stainless steel stand with storage
- ☐ External caster kit
- ☐ DWT-LXe drain water tempering kit

Specifications, Details and Dimensions on Back.



LXeR advansys HOT

⚠ WARNING

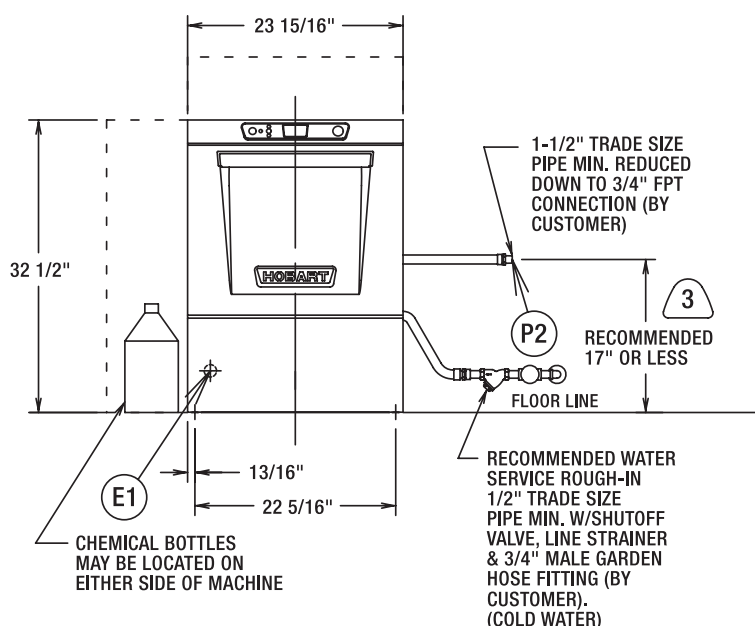
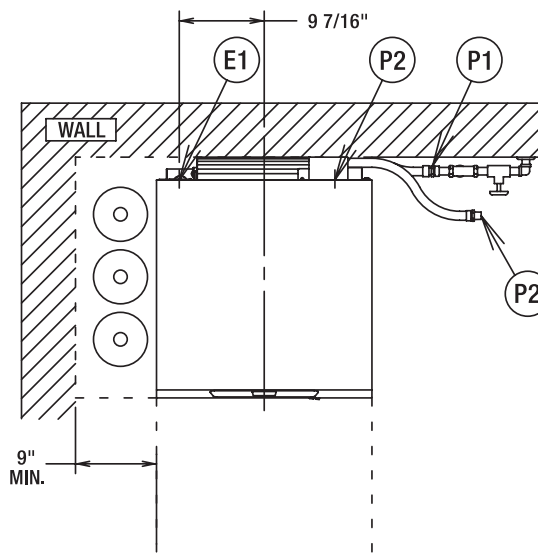
Electrical and grounding connections must comply with the applicable portions of the National Electrical Code and/or other local electrical codes.

Plumbing connections must comply with applicable sanitary, safety and plumbing codes. Drain and fill line configurations vary, some methods are shown on this drawing.

CONNECTION INFORMATION (AFF = ABOVE FINISHED FLOOR)

LEGEND

- E1 ELECTRICAL CONNECTION: 1-3/8" DIA. HOLE FOR 1" TRADE SIZE CONDUIT; 4-5/8" AFF.
- P1 SINGLE FILL AND RINSE CONNECTION: 3/4" FEMALE GARDEN HOSE FITTING ON 6' LONG HOSE SUPPLIED WITH MACHINE.; 55-80°F (COLD) RECOMMENDED FOR LXeR.
- P2 DRAIN CONNECTION: 5/8" BARB FITTING WITH 6' LONG HOSE SUPPLIED WITH MACHINE.



| MODEL | VOLTS/HERTZ/PHASE | RATED AMPS | MIN SUPPLY CKT CONDUCTOR AMPACITY | MAX PROTECTIVE DEVICE |
|-------|-----------------------|------------|-----------------------------------|-----------------------|
| LXeR | 208-240/60/1 | 30.5 | 40 | 40 |
| | 120/208-240(3W)/60/1* | 30.5 | 40 | 40 |
| | 120/208(3W)/60/1** | 20.9 | 30 | 30 |
| | 208-240/60/3 | 23.9 | 30 | 30 |
| | 220-240/50/1 | 30.5 | 40 | 40 |

NOTE: FOR SUPPLY CONNECTIONS, USE COPPER WIRE ONLY RATED AT 90°C MINIMUM.

* THIS SYSTEM REQUIRES THREE POWER WIRES WHICH INCLUDES A CURRENT CARRYING NEUTRAL, AN ADDITIONAL FOURTH WIRE MUST BE PROVIDED FOR MACHINE GROUND.

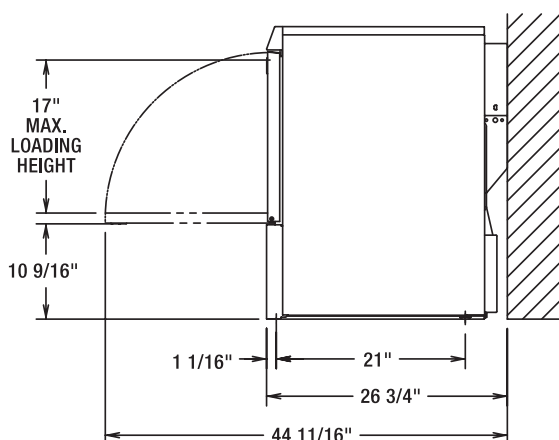
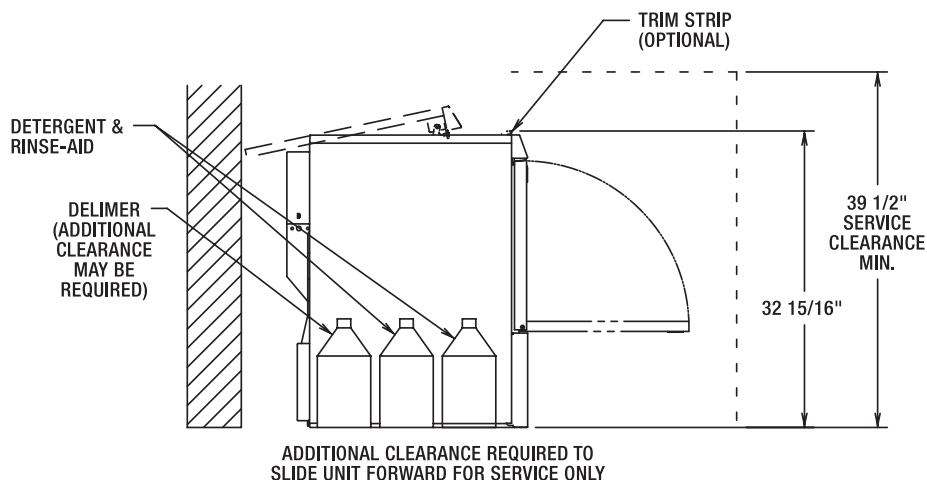
** ORDER MODEL LXER-30 (BOOSTER AND TANK HEATER NOT ENERGIZED CONCURRENTLY).

ACCESSORY CORD KIT AVAILABLE FOR ALL MACHINES



701 S Ridge Avenue, Troy, OH 45374
1-888-4HOBART • www.hobartcorp.com

LXer advansys
HOT



NOTICE

Required flowing water pressure to the dishmachine is 15-65 PSIG. If pressures higher than 65 PSIG are present, a pressure regulating valve must be installed in the water line to the dishmachine (by others).

Pressure gauge not required on pumped rinse machines.

If chemical containers are to be placed in cabinet adjacent to machine, a 1/2" dia. hole is required in the cabinet to run chemical supply line.

Notes:

1. All vertical machine dimensions taken from floor may be increased by 1".
2. Moist air escapes from the door. Use only moisture resistant materials adjacent to dishmachine sides and top.
3. A vent hood is not recommended above the undercounter dishmachine since it does not produce excessive vapors.
4. A 55-80°F incoming cold water connection is recommended for the LXer.

Plumbing notes:

1. Water hammer arrestor (meeting ASSE-1010 Standard or equivalent) to be supplied (by others) in common water supply line at service connection.
2. Recommended water hardness to be 3 grains or less for best results.
3. If drain hose is looped above a sink, the loop must not exceed 38" AFF.

| HEAT OUTPUT, BTU/HR | | |
|---------------------|--------|----------|
| MODEL | LATENT | SENSIBLE |
| LXer | 1100 | 2000 |

| SHIPPING WEIGHTS | LXer |
|--------------------------|---------|
| NET WEIGHT OF MACHINE | 165 LBS |
| DOMESTIC SHIPPING WEIGHT | 185 LBS |

MODELS:
LXer
00-947872
REV C

SPECIFICATIONS

DESIGN: Front opening, equipped for installation in either freestanding or undercounter-type operations.

CONSTRUCTION: 300 series stainless steel tank, door and top panel.

PUMP: Centrifugal-type, integral with motor, horizontally mounted. Pump capacity 38 gpm.

MOTOR: Single phase, furnished for all electrical specifications. Factory sealed lubrication. Inherent overload protection with auto reset.

WASH AND RINSE CYCLE: Complete automatic type, controlled by solid-state electronics. Cycle may be interrupted any time by opening door. Cycle continues when door is closed.

- Initial cycle fills wash tank, to be recirculated each wash cycle. Some wash water is drained off before rinse cycle. Rinse cycle refreshes wash water and tank heat.

RINSE PUMP: Powered by a single phase motor, the rinse pump is made of high strength engineered composite material.

BLOWER: The blower is a 60mm x 300mm tangential wheel powered by a 2-pole single phase motor for quiet and reliable operation, LXeR only.

CONDENSER COIL: The condensing system uses a tube and fin coil constructed of copper and corrosion resistant aluminum. The condenser coil allows for energy recovery from waste heat in the moisture laden air that would normally escape into the environment after a dishwashing cycle, LXeR only.

RINSE AND SANITATION:

- LXeR:** Sanitation is accomplished by means of a built-in booster heater designed to raise temperature of water to a minimum of 180°F from an incoming water temperature of 55°F.

ENERGY RECOVERY: Heat energy is recovered from the condensation of vapors in the chamber at the end of each cycle. This pre-heats the water for the next rinse cycle from 55°F up to 140°F.

PUMPED DRAIN: Machine automatically drains water through a built-in pump. Maximum 38" drain height permitted.

ELECTRIC BOOSTER HEATER: 4.9 KW electric booster with Sense-A-Temp™ technology adequately sized to raise 55°F inlet water to 180°F, with the aid of the energy recovery system.

RACKING: Machines accommodate racks from 10" x 20" to 20" x 20". Also accepts 16" x 18" cafeteria trays.

SPECIFICATIONS: Listed by Underwriters Laboratories Inc. and NSF International.

| MACHINE RATINGS | LXeR | | |
|---|--------------------|--------|-------|
| | Light | Normal | Heavy |
| Racks per Hour Rate | 30 | 24 | 13 |
| Dishes per Hour (25 per Rack Avg.) | 750 | 600 | 325 |
| Glasses per Hour (36 per Rack Avg.) | 1080 | 864 | 468 |
| Controls | Microcomputer | | |
| Tank Capacity - Gallons | 2.9 | | |
| Overall Dimensions - H x W x D | 32½" x 23½" x 26½" | | |
| Cycle Time - Seconds | 120 | 146 | 275 |
| Tank Heat | 1.8 KW | | |
| Electric Booster Heater | 4.9 KW | | |
| Water Usage Per Rack - Gallons | .62 | | |
| Drain Design | Pumped | | |
| Door Opening Height | 17" | | |
| Detergent Pump | Standard | | |
| Rinse-Aid Pump | Standard | | |
| Delime Pump | Standard | | |
| Sanitizer Pump | N/A | | |
| Chemical Prime (auto prime) | Standard | | |
| Peak Drain Flow - GPM | 4.0 | | |
| Advanced Service Diagnostics | Standard | | |
| Advanced Cleaning Cycle | Standard | | |
| 70° Rise Sense-A-Temp™ Booster Heater | Standard | | |
| Incoming Water Temperature Required (minimum) | 55° | | |

As continued product improvement is a policy of Hobart, specifications are subject to change without notice.